



**BUREAU
VERITAS**

Technical Report: (8512)146-0200



C/N GORILLA



BIG LOTS, INC. TEST REPORT (Transit Testing)

BIG LOTS
300 PHILIPPI RD
COLUMBUS, OH 43228

ATTN: ART PIETRAFESA

CC: FRIEND GIFTS MANUFACTORY
- MR. DONNY LIAO

LAB LOCATION: SHENZHEN
LAB NUMBER: (SZ)(8512)146-0141
CLIENT NO.: /
DEPARTMENT: 363
DATE IN: MAY 28, 2012
DATE OUT: MAY 31, 2012
MOD. LOG IN: /
WORKING DAYS: 4
REVISED DATE: /
PAGE: PAGE 3 OF 17

OVERALL RATING	
GOOD	_____ X _____
UNSATISFACTORY	_____

**TESTING FOR
PACKAGED PRODUCT TRANSIT TESTING ISTA
1A / 1B (V1)
BIGL - 09000 - AMN**

Sample Description:	6X10 MIXED LICENSED WINDOW CLING ASSORTMENT, 6X10 SPOOKY TOWN 3D HALLOWEEN WINDOW CLINGS		
Final Packaging:	Yes (submitted for review)	PO Numbers	10055512
Manufacturer:	FRIEND GIFTS MANUFACTORY		
Country of Origin:	CHINA	Style:	42923, 45901
Color:	/	SKU Number:	363003780 , 363003781
Re-test:	Yes: <input type="checkbox"/>	No: <input checked="" type="checkbox"/>	Charge Vendor: Yes: <input checked="" type="checkbox"/> No: <input type="checkbox"/>
Previous Report No.:	/		
Revised Report:	Yes: <input type="checkbox"/>	No: <input checked="" type="checkbox"/>	
Reason For Revision:	/		

TEST PROPERTY	GOOD	UNSATISFACTORY	COMMENTS
ISTA Transit Test	X		SEE EXECUTIVE SUMMARY

VALIDITY PERIOD: THIS REPORT IS VALID THROUGH MAY 31, 2013

Initial GOOD = Valid for 12 months
Re-test = Valid for 6 months



REMARK:

This report is composed of two cartons: (8512)146-0141 and (8512)146-0200.

EXECUTIVE SUMMARY: (8512)146-0141

The package is rated as **Good** with no noticeable damage noted after vibration and drop tests per Big Lots ISTA Test Procedure 1A.

DESCRIPTION OF PACKAGE: (8512)146-0141

Regular slotted master container is glued at seam joints and secured by tapes. (See Enclosed (8512)146-0141 Exhibits 1-4)

The sample product and the inner packaging material are shown in the exhibits. (See Enclosed (8512)146-0141 Exhibits 4-9)

Quantity of product in master pack: 8 inner boxes, 24 piece per each inner box, 6 styles.

The dimension of each inner box is 6-1/2"x3-1/4"x10-1/4"

EXECUTIVE SUMMARY: (8512)146-0200

The package is rated as **Good** with no noticeable damage noted after vibration and drop tests per Big Lots ISTA Test Procedure 1A.

DESCRIPTION OF PACKAGE:

Regular slotted master container is glued at seam joints and secured by tapes. (See Enclosed (8512)146-0200 Exhibits 1-4)

The sample product and the inner packaging material are shown in the exhibits. (See Enclosed (8512)146-0200 Exhibits 4-9)

Quantity of product in master pack: 8 inner boxes, 24 piece per each inner box, 4 styles.

The dimension of each inner box is 6-3/8"x3-1/4"x10-3/8"



If there are questions regarding above report, please contact the appropriate lab personnel.

Technical questions, please contact:

Kris Wan / John Hong
(+86)755-86000151 (Ext 6225/ 6207)
kris.wan@cn.bureauveritas.com
john.hong@cn.bureauveritas.com

Administrative questions, please contact:

Annie Wen/ Sherry yang
(+86)755-86000151 (Ext 6255/ 6205)
Annie.wen@cn.bureauveritas.com
Sherry.yang@cn.bureauveritas.com

BUREAU VERITAS SHENZHEN CO., LTD

ROBERT WONG
MANAGER – HARDLINES DIVISION



BV Lab Number: (8512)146-0141
 Technician Name: OWEN LIAO
 Test Date: MAY 30, 2012
 Reviewed By/Date: GORILLA/ MAY 31, 2012

BIG LOTS, INC TEST PROTOCOL FOR
BIGL - 09000 - AMN
PACKAGED PRODUCT TRANSIT TESTING ISTA 1A / 1B (V1)

Evaluation	Citation / Method	No. of Samples	Criteria	Results	Rating
LABELING					
Labeling	ISTA Procedure 1A & 1B (2001)	1	[OVER PACKAGING] Label identifying an "Over-packaged product for drop / vibration testing"; report it present; report as data only.	No Over-packaging	-
Labeling	ISTA Procedure 1A & 1B (2001)	1	[PACKAGED PRODUCT] Label identifying a "Packaged product for drop / vibration testing"; report as data only.	Non-Labeled	-
PHYSICAL CHARACTERISTICS					
Dimensions - length	CPSD-HL-01056-MTHD / Standard measure	1	Report overall length.	C:/ R:13-3/4"x13-3/4"x11-5/8"	-
Weight	CPSD-HL-01056-MTHD / Standard measure	1	Report overall weight; shall meet label claims (If applicable)	C:/ R: 17.4Lbs.	-
Material description	Visual / CPSD-HL-01057-MTHD	1	[Material Qualities] Report material.	C:/ R: Double Wall-Corrugated Board	-
Color or finish quality - material	CPSD-HL-01057-MTHD / Visual	1	[Material Qualities] Report color.	C:/ R:Brown	-
Dimensions - thickness	CPSD-HL-01056-MTHD / Standard measure	1	[Material Qualities] Report overall thickness.	C: / R: 0.245"	-
WORKMANSHIP					
Over-packaged	ISTA Procedure 1A & 1B (R2001)	1	[OVER PACKAGING] Product and package shall be over-packaged.	NA	-



BV Lab Number: (8512)146-0141
 Technician Name: OWEN LIAO
 Test Date: MAY 30, 2012
 Reviewed By/Date: GORILLA/ MAY 31, 2012

BIGL - 09000 - AMN
PACKAGED PRODUCT TRANSIT TESTING ISTA 1A / 1B (V1)

Evaluation	Citation / Method	No. of Samples	Criteria	Results	Rating
Inspection	CPSD-HI-01057-MTHD / Visual	1	[OVER PACKAGING] No major defects / no breaks in or crushing of the over-packaging; report as data only.	NA	-
Inspection	CPSD-HI-01057-MTHD / Visual	1	[PACKAGED PRODUCT] No major defects / no breaks in or crushing of the packaging - The packaged product shall not be opened prior to testing unless there is a sign of damage such as rattling. In this case, the package can be opened and the item inspected for damage. Damaged product will not be tested. Inner packaging must not be disturbed in a manner to compromise test results after resealing the package; report as data only.	M	Pass
Hazards	Visual / CPSD-HL-01057-MTHD	1	[PACKAGED PRODUCT] Staples are not permitted in the construction of the carton except along the bottom or along the manufacturer's edge only. Steel strapping is not permitted. Plastic strapping is permitted but the securing device / method (i.e. Buckle) must not contain or create a sharp point or edge. Report as DATA only and make a note in the Executive Summary, do not Pass/ Fail.	M	Pass
Display box	CPSD-HL-01057-MTHD / Visual	1	[PACKAGED PRODUCT] Evaluate and report any package failures; report as data only.	NA	-
PERFORMANCE					
For packaged - product 150 lb or less	ISTA procedure 1A (R2001)	1	[TEST PROCEDURES] [Vibration] after 14,200 vibratory impacts.	M -Cycle 1: 33 minutes 58 seconds at 209 cpm -Cycle 2: 33 minutes 39 seconds at 211 cpm	Pass



BV Lab Number: (8512)146-0141
 Technician Name: OWEN LIAO
 Test Date: MAY 30, 2012
 Reviewed By/Date: GORILLA/ MAY 31, 2012

**BIGL - 09000 - AMN
 PACKAGED PRODUCT TRANSIT TESTING ISTA 1A / 1B (V1)**

Evaluation	Citation / Method	No. of Samples	Criteria	Results	Rating
For packaged - product 150 lb or less	ISTA procedure 1A (R2001)	1	[TEST PROCEDURES] [Impact] No major damage after 10 drops from a specific height in a specific sequence as described in ISTA 6 / 2004 procedure 1A. Drop 1: Most fragile corner or corner at mfg. Joint. Drop 2: Shortest edge radiating from corner. Drop 3: Next longest edge radiating from corner. Drop 4: Longest edge radiating from corner. Drop 5: Flat on one of the smallest faces Drop 6: Flat on the opposite small face. Drop 7: Flat on one of the medium faces. Drop 8: Flat on the opposite medium face. Drop 9: Flat on one of the largest faces. Drop 10: Flat on the opposite large face.	M (Drop Height: 30")	Pass
For packaged - product > 150 lb	ISTA procedure 1B (R2001)	1	[TEST PROCEDURES] [Vibration] after 11,800 vibratory impacts.	NA	-
For packaged - product > 150 lb	ISTA procedure 1B (R2001)	1	[TEST PROCEDURES] [Impact] No major damage after 6 drops from a specific height in a specific sequence as described in ISTA 6 / 2004 procedure 1B. Drop 1: Flat on one of the smallest faces Drop 2: Flat on the opposite small face. Drop 3: Flat on one of the medium faces. Drop 4: Flat on the opposite medium face. Drop 5: Flat on one of the largest faces. Drop 6: Flat on the opposite large face.	NA	-



BV Lab Number: (8512)146-0141
 Technician Name: OWEN LIAO
 Test Date: MAY 30, 2012
 Reviewed By/Date: GORILLA/ MAY 31, 2012

**BIGL - 09000 - AMN
 PACKAGED PRODUCT TRANSIT TESTING ISTA 1A / 1B (V1)**

Evaluation	Citation / Method	No. of Samples	Criteria	Results	Rating
* Inspection of Electrical Samples After Testing	CPSD-HL-01057-MTHD / Visual	1	[WHEN APPLICABLE] No damage to electrical components. Must function as intended.	NA	-

Key:

- * Additional Charge For This Test
- ** Mandatory Requirement
- # By Request Only

Result Key:

- C Claimed
- R Recorded
- M Meets
- NM Does Not Meet
- NA Not Applicable
- NT Not Tested

Rating Key:

- PASS Pass
- FAIL Fail

No. Of Samples Required for Complete Testing	1
No. Of (Fully Packed) Cartons For Transit Testing:	1
No. Of Working Days For Complete Testing:	5

Client Approval: JULY 28, 2011 / Art Pietrafesa
 Creation Date: JULY 08, 2011
 Last Revision Date: JULY 27, 2011
 Pricing Review Date:
 Technical Review Date:



BV Lab Number: (8512)146-0200
 Technician Name: OWEN LIAO
 Test Date: MAY 30, 2012
 Reviewed By/Date: GORILLA/ MAY 31, 2012

BIG LOTS, INC TEST PROTOCOL FOR
BIGL - 09000 - AMN
PACKAGED PRODUCT TRANSIT TESTING ISTA 1A / 1B (V1)

Evaluation	Citation / Method	No. of Samples	Criteria	Results	Rating
LABELING					
Labeling	ISTA Procedure 1A & 1B (2001)	1	[OVER PACKAGING] Label identifying an "Over-packaged product for drop / vibration testing"; report it present; report as data only.	No Over-packaging	-
Labeling	ISTA Procedure 1A & 1B (2001)	1	[PACKAGED PRODUCT] Label identifying a "Packaged product for drop / vibration testing"; report as data only.	Non-Labeled	-
PHYSICAL CHARACTERISTICS					
Dimensions - length	CPSD-HL-01056-MTHD / Standard measure	1	Report overall length.	C:/ R:13-7/8"x13-7/8"x11-3/8"	-
Weight	CPSD-HL-01056-MTHD / Standard measure	1	Report overall weight; shall meet label claims (If applicable)	C:/ R: 14.7Lbs.	-
Material description	Visual / CPSD-HL-01057-MTHD	1	[Material Qualities] Report material.	C:/ R: Double Wall-Corrugated Board	-
Color or finish quality - material	CPSD-HL-01057-MTHD / Visual	1	[Material Qualities] Report color.	C:/ R:Brown	-
Dimensions - thickness	CPSD-HL-01056-MTHD / Standard measure	1	[Material Qualities] Report overall thickness.	C: / R: 0.245"	-
WORKMANSHIP					
Over-packaged	ISTA Procedure 1A & 1B (R2001)	1	[OVER PACKAGING] Product and package shall be over-packaged.	NA	-

C/N GORILLA



BV Lab Number: (8512)146-0200
 Technician Name: OWEN LIAO
 Test Date: MAY 30, 2012
 Reviewed By/Date: GORILLA/ MAY 31, 2012

BIGL - 09000 - AMN
PACKAGED PRODUCT TRANSIT TESTING ISTA 1A / 1B (V1)

Evaluation	Citation / Method	No. of Samples	Criteria	Results	Rating
Inspection	CPSD-HI-01057-MTHD / Visual	1	[OVER PACKAGING] No major defects / no breaks in or crushing of the over-packaging; report as data only.	NA	-
Inspection	CPSD-HI-01057-MTHD / Visual	1	[PACKAGED PRODUCT] No major defects / no breaks in or crushing of the packaging - The packaged product shall not be opened prior to testing unless there is a sign of damage such as rattling. In this case, the package can be opened and the item inspected for damage. Damaged product will not be tested. Inner packaging must not be disturbed in a manner to compromise test results after resealing the package; report as data only.	M	Pass
Hazards	Visual / CPSD-HL-01057-MTHD	1	[PACKAGED PRODUCT] Staples are not permitted in the construction of the carton except along the bottom or along the manufacturer's edge only. Steel strapping is not permitted. Plastic strapping is permitted but the securing device / method (i.e. Buckle) must not contain or create a sharp point or edge. Report as DATA only and make a note in the Executive Summary, do not Pass/ Fail.	M	Pass
Display box	CPSD-HL-01057-MTHD / Visual	1	[PACKAGED PRODUCT] Evaluate and report any package failures; report as data only.	NA	-
PERFORMANCE					
For packaged - product 150 lb or less	ISTA procedure 1A (R2001)	1	[TEST PROCEDURES] [Vibration] after 14,200 vibratory impacts.	M -Cycle 1: 34 minutes 28 seconds at 206 cpm -Cycle 2: 34 minutes 08 seconds at 208 cpm	Pass



BV Lab Number: (8512)146-0200
 Technician Name: OWEN LIAO
 Test Date: MAY 30, 2012
 Reviewed By/Date: GORILLA/ MAY 31, 2012

BIGL - 09000 - AMN
PACKAGED PRODUCT TRANSIT TESTING ISTA 1A / 1B (V1)

Evaluation	Citation / Method	No. of Samples	Criteria	Results	Rating
For packaged - product 150 lb or less	ISTA procedure 1A (R2001)	1	[TEST PROCEDURES] [Impact] No major damage after 10 drops from a specific height in a specific sequence as described in ISTA 6 / 2004 procedure 1A. Drop 1: Most fragile corner or corner at mfg. Joint. Drop 2: Shortest edge radiating from corner. Drop 3: Next longest edge radiating from corner. Drop 4: Longest edge radiating from corner. Drop 5: Flat on one of the smallest faces Drop 6: Flat on the opposite small face. Drop 7: Flat on one of the medium faces. Drop 8: Flat on the opposite medium face. Drop 9: Flat on one of the largest faces. Drop 10: Flat on the opposite large face.	M (Drop Height: 30")	Pass
For packaged - product > 150 lb	ISTA procedure 1B (R2001)	1	[TEST PROCEDURES] [Vibration] after 11,800 vibratory impacts.	NA	-
For packaged - product > 150 lb	ISTA procedure 1B (R2001)	1	[TEST PROCEDURES] [Impact] No major damage after 6 drops from a specific height in a specific sequence as described in ISTA 6 / 2004 procedure 1B. Drop 1: Flat on one of the smallest faces Drop 2: Flat on the opposite small face. Drop 3: Flat on one of the medium faces. Drop 4: Flat on the opposite medium face. Drop 5: Flat on one of the largest faces. Drop 6: Flat on the opposite large face.	NA	-



BV Lab Number: (8512)146-0200
 Technician Name: OWEN LIAO
 Test Date: MAY 30, 2012
 Reviewed By/Date: GORILLA/ MAY 31, 2012

BIGL - 09000 - AMN
PACKAGED PRODUCT TRANSIT TESTING ISTA 1A / 1B (V1)

Evaluation	Citation / Method	No. of Samples	Criteria	Results	Rating
* Inspection of Electrical Samples After Testing	CPSD-HL-01057-MTHD / Visual	1	[WHEN APPLICABLE] No damage to electrical components. Must function as intended.	NA	-

Key:

* Additional Charge For This Test
 ** Mandatory Requirement
 # By Request Only

Result Key:

C Claimed
 R Recorded
 M Meets
 NM Does Not Meet
 NA Not Applicable
 NT Not Tested

Rating Key:

PASS Pass
 FAIL Fail

No. Of Samples Required for Complete Testing	1
No. Of (Fully Packed) Cartons For Transit Testing:	1
No. Of Working Days For Complete Testing:	5

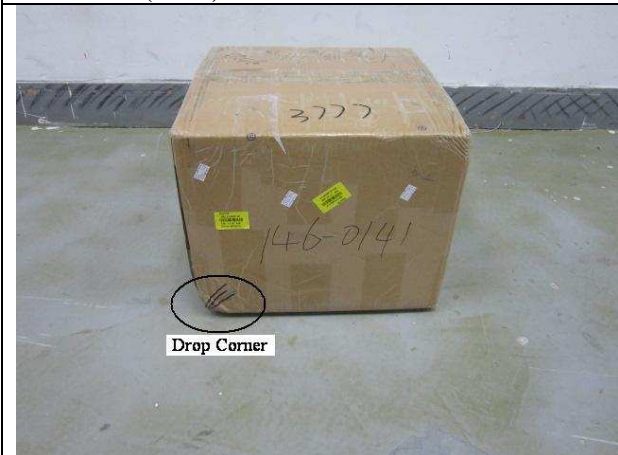
Client Approval: JULY 28, 2011 / Art Pietrafesa
 Creation Date: JULY 08, 2011
 Last Revision Date: JULY 27, 2011
 Pricing Review Date:
 Technical Review Date:



(8512)146-0141 EXHIBIT 01



(8512)146-0141 EXHIBIT 02



(8512)146-0141 EXHIBIT 03



(8512)146-0141 EXHIBIT 04



(8512)146-0141 EXHIBIT 05



(8512)146-0141 EXHIBIT 06



**BUREAU
VERITAS**



(8512)146-0141 EXHIBIT 07



(8512)146-0141 EXHIBIT 08



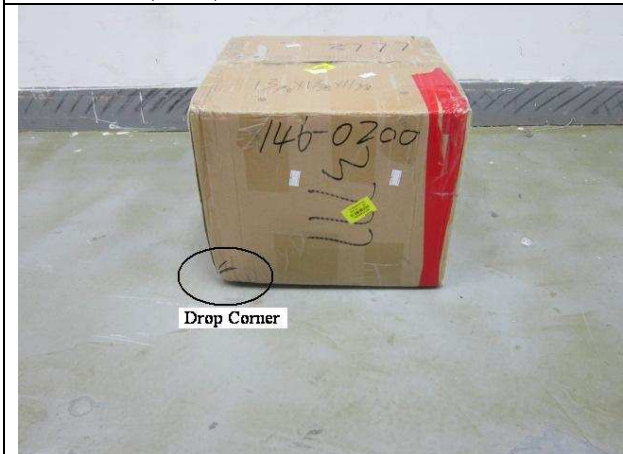
(8512)146-0141 EXHIBIT 09



(8512)146-0200 EXHIBIT 01



(8512)146-0200 EXHIBIT 02



(8512)146-0200 EXHIBIT 03



(8512)146-0200 EXHIBIT 04



(8512)146-0200 EXHIBIT 05



(8512)146-0200 EXHIBIT 06



**BUREAU
VERITAS**

(8512)146-0141
Page 17 of 17



(8512)146-0200 EXHIBIT 07



(8512)146-0200 EXHIBIT 08



(8512)146-0200 EXHIBIT 09

C/N GORILLA